

**IDH3B (aa33-46) Antibody (internal region, near N-Term)**  
**Peptide-affinity purified goat antibody**  
**Catalog # AF3576a****Specification**

---

**IDH3B (aa33-46) Antibody (internal region, near N-Term) - Product Information**

Application	WB, E
Primary Accession	<a href="#">O43837</a>
Other Accession	<a href="#">NP_008830.2</a> , <a href="#">NP_777280.1</a> , <a href="#">3420</a> , <a href="#">170718</a> (mouse), <a href="#">94173</a> (rat)
Reactivity	Human, Mouse, Rat
Predicted	Pig, Dog
Host	Goat
Clonality	Polyclonal
Concentration	0.5 mg/ml
Isotype	IgG
Calculated MW	42184

**IDH3B (aa33-46) Antibody (internal region, near N-Term) - Additional Information****Gene ID** 3420**Other Names**

Isocitrate dehydrogenase [NAD] subunit beta, mitochondrial, 1.1.1.41, Isocitric dehydrogenase subunit beta, NAD(+)-specific ICDH subunit beta, IDH3B

**Dilution**

WB~~1:1000

E~~N/A

**Format**

0.5 mg/ml in Tris saline, 0.02% sodium azide, pH7.3 with 0.5% bovine serum albumin

**Storage**

Maintain refrigerated at 2-8°C for up to 6 months. For long term storage store at -20°C in small aliquots to prevent freeze-thaw cycles.

**Precautions**

IDH3B (aa33-46) Antibody (internal region, near N-Term) is for research use only and not for use in diagnostic or therapeutic procedures.

**IDH3B (aa33-46) Antibody (internal region, near N-Term) - Protein Information****Name** IDH3B**Function**

Plays a structural role to facilitate the assembly and ensure the full activity of the enzyme

catalyzing the decarboxylation of isocitrate (ICT) into alpha-ketoglutarate. The heterodimer composed of the alpha (IDH3A) and beta (IDH3B) subunits and the heterodimer composed of the alpha (IDH3A) and gamma (IDH3G) subunits, have considerable basal activity but the full activity of the heterotetramer (containing two subunits of IDH3A, one of IDH3B and one of IDH3G) requires the assembly and cooperative function of both heterodimers.

#### Cellular Location

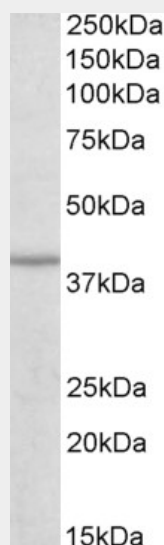
Mitochondrion.

#### IDH3B (aa33-46) Antibody (internal region, near N-Term) - Protocols

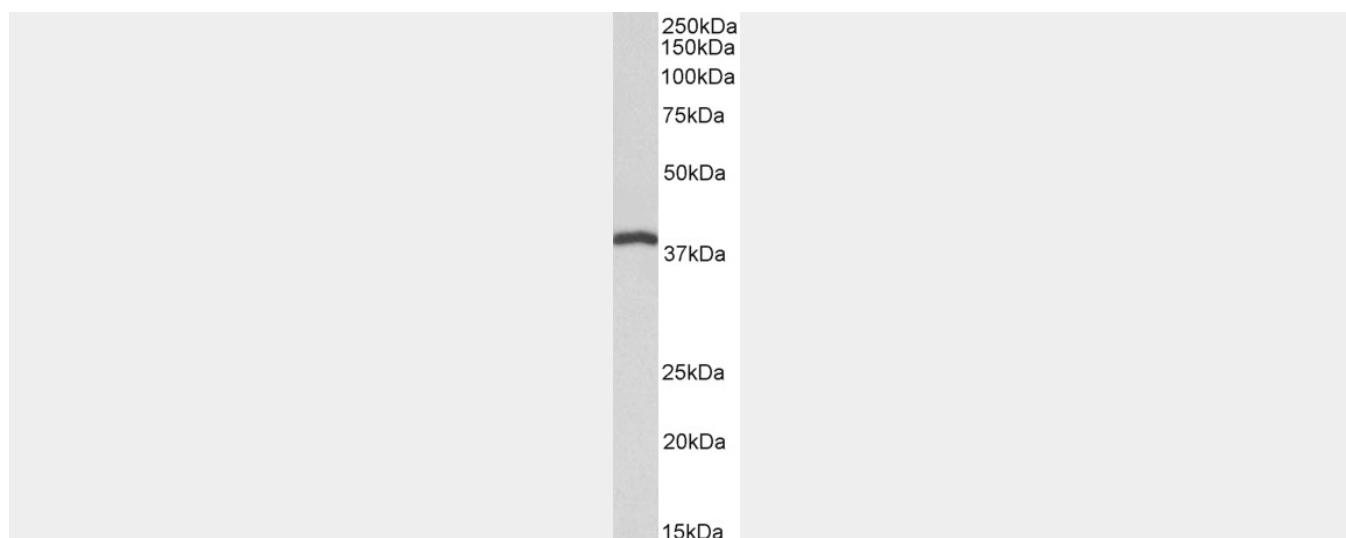
Provided below are standard protocols that you may find useful for product applications.

- [Western Blot](#)
- [Blocking Peptides](#)
- [Dot Blot](#)
- [Immunohistochemistry](#)
- [Immunofluorescence](#)
- [Immunoprecipitation](#)
- [Flow Cytometry](#)
- [Cell Culture](#)

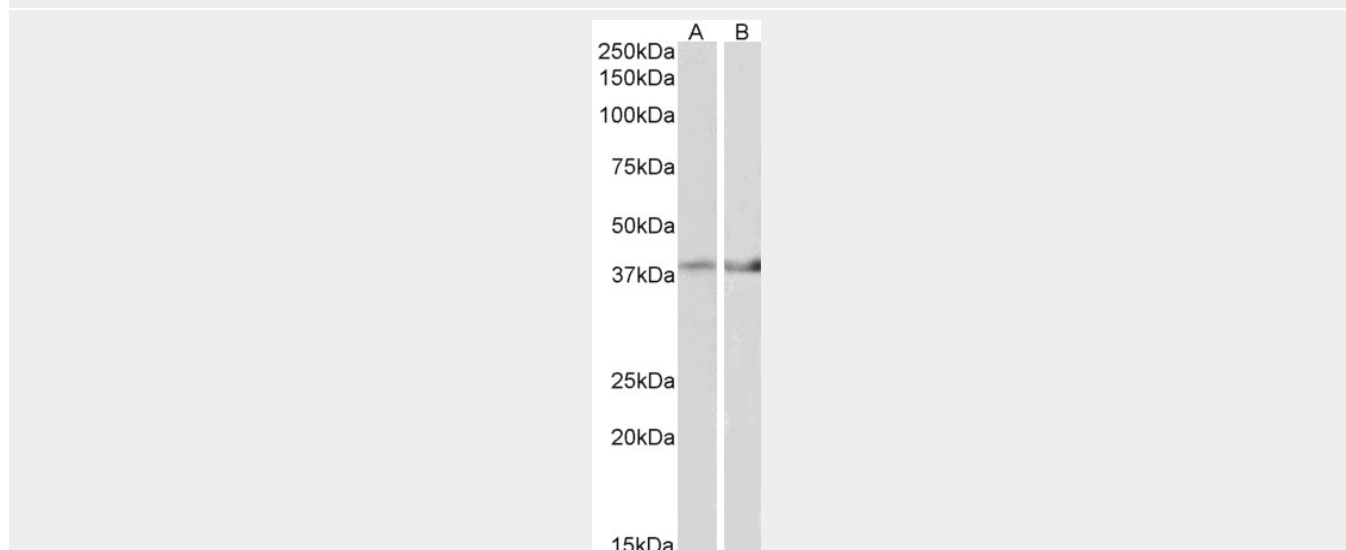
#### IDH3B (aa33-46) Antibody (internal region, near N-Term) - Images



AF3576a (0.3 µg/ml) staining of Human Skeletal muscle lysate (35 µg protein in RIPA buffer). Primary incubation was 1 hour. Detected by chemiluminescence.



AF3576a (0.1µg/ml) staining of Pig Heart lysate (35µg protein in RIPA buffer). Primary incubation was 1 hour. Detected by chemiluminescence.



AF3576a (2µg/ml) staining of Mouse Heart (A) and Mouse Muscle (B) lysate (35µg protein in RIPA buffer). Primary incubation was 1 hour. Detected by chemiluminescence.

#### **IDH3B (aa33-46) Antibody (internal region, near N-Term) - Background**

This antibody is expected to recognize isoform a (NP\_008830.2) and isoform b (NP\_777280.1).

#### **IDH3B (aa33-46) Antibody (internal region, near N-Term) - References**

Role of alpha-Asp181, beta-Asp192, and gamma-Asp190 in the distinctive subunits of human NAD-specific isocitrate dehydrogenase. Bzymek KP, Colman RF. Biochemistry. 2007 May 8;46(18):5391-7. PMID: 17432878